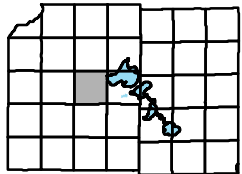
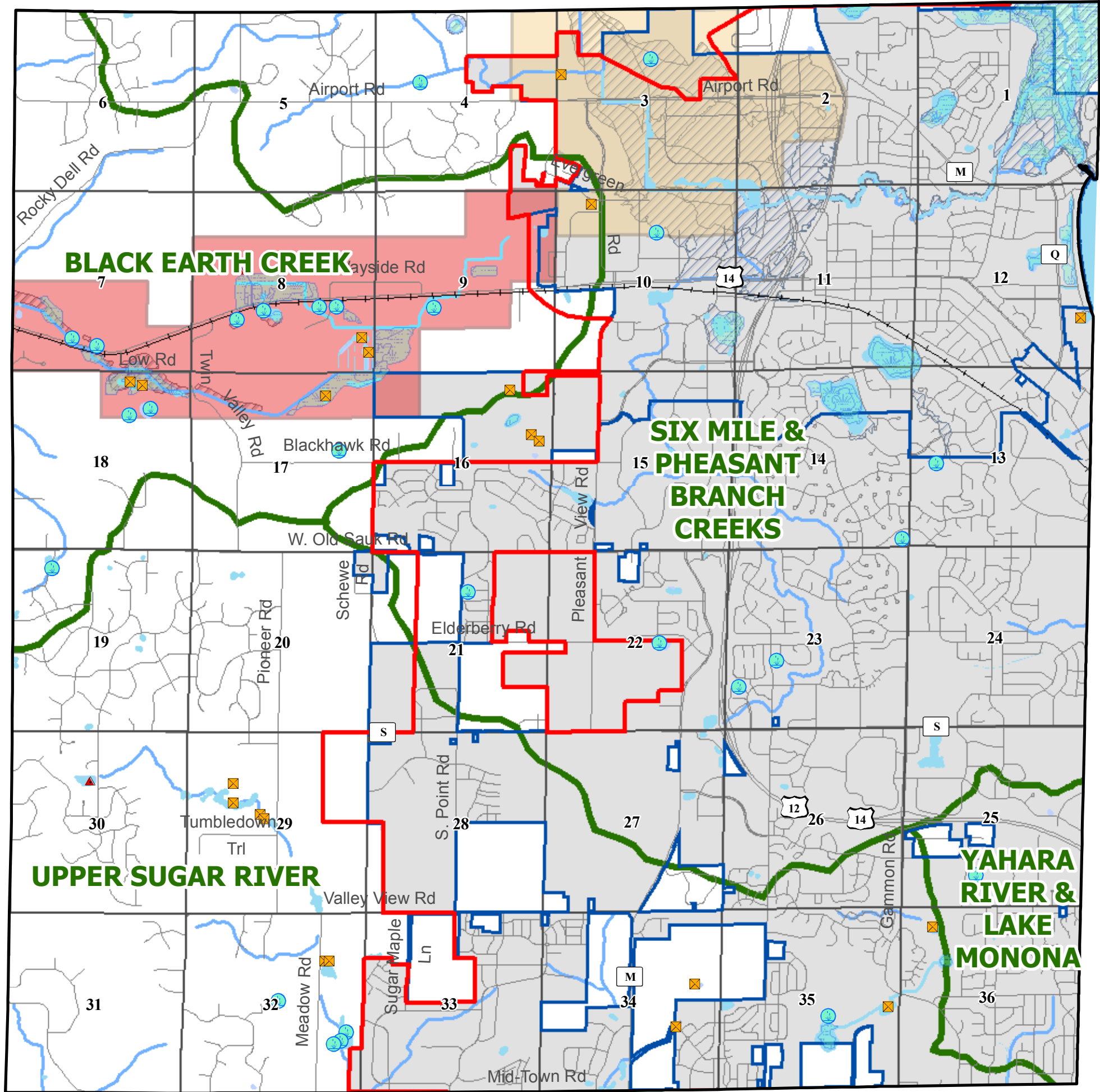


# Town of Middleton



## Map 6: Water Resources



**DRAFT**

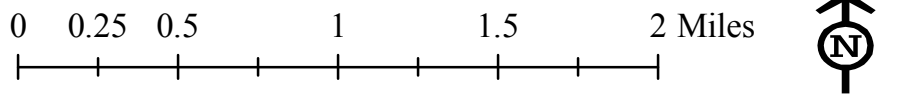
- Wetlands < 2 acres
- Dammed Pond
- Excavated Pond
- Wetlands > 2 acres
- Watershed Boundary
- 100 Year Floodplain (FEMA 2003)
- Active Drainage District
- Stop Work Drainage District
- City or Village Boundary
- Central Urban Service Area
- Section Boundary

The 100 year floodplain is based on a digitization of the National Flood Insurance Program maps. These maps are maintained and updated by The Federal Insurance and Mitigation Administration's Hazard Mapping Division.

Drainage districts are local government entities organized to drain land for agriculture or other purposes. Land is drained using ditches or tiles that cross individual property boundaries and landowners in a district who benefit from drainage are required to pay assessments to cover the cost of constructing, maintaining, and repairing the drainage system. As part of Wisconsin Department of Agriculture, Trade and Consumer Protection (DATCP) administrative rule (ch.88, Wis. Stats. and ch. ATCP 48, Wis. Admin. Code), all drainage districts in the state are required to update their records. Drainage district boundaries were obtained from historical records from DATCP and the Dane County Drainage Board.

Floodplains do not represent only those areas that will flood, rather they are meant to locate potential areas that are susceptible to flooding. For a detailed analysis of floodplains contact the FEMA Hazard Mapping Division at 1-877-FEMA-MAP.

For interpretation or regulation of floodplains contact the Dane County Zoning Administrators office at 266-9083. *May, 2007*



Source Info:  
 Central Urban Service Area: 05/07, (DCPD)  
 City or Village Boundary: 01/07, (DCPD)  
 Drainage District: 1998, (DCLCD)  
 Floodplain: 2003, (FEMA)  
 Hydrography: 2005, (WIDNR)  
 Watershed Boundaries: 2005, (DCLIO)  
 Wetlands: 2000, (WIDNR)

This map was prepared through the Dane County Department of Planning and Development in conjunction with the Dane County Land & Water Resources Department, Dane County Land Information Office and the Dane County Community Analysis & Planning Division.